



Impact Report

2024



edmarc
hope for the journey

Table of Contents



Introduction



Our Story So Far



Core Services



Achievements &
Performance



Expansion
Campaign



Campaign
Contributors



Introduction

Dear Friends and Supporters,

Reflecting on this past year, we are overwhelmed with gratitude and pride for what we have accomplished together. Our mission to provide compassionate home health, palliative, and hospice care to children has driven us to new heights, thanks to the unwavering support of our community, donors, and dedicated staff.

Celebrating Milestones

This year has been transformative. We successfully concluded our Expansion Campaign, raising an incredible \$2,008,540.70. This monumental achievement has enabled us to expand our services into additional areas west of our current service area, ensuring that more children and families have access to the care they need.

Our commitment is reflected in the advanced training programs we have provided to our healthcare professionals. By investing in their development, we ensure that our team is equipped with the skills and knowledge necessary to offer the best possible care. The introduction of telehealth services has also been a game-changer, ensuring continuous and comprehensive care.

Community and Compassion

The heart of our organization lies in the stories of the children and families we serve. From the bravery of a young patient facing a terminal illness to the resilience of families finding solace and support in our services, each story reaffirms the importance of our mission. Your generosity has enabled us to continue to grow our family support programs and events by providing holistic support during the most challenging times.

Our success is a testament to the power of community. The support we have received from individuals, businesses, and organizations has been nothing short of extraordinary. Together, we have built a network of care and compassion that extends into homes and hearts across our service areas.

Looking Ahead

While we celebrate our achievements, we are acutely aware that our work is far from over. The demand for our services continues to grow, and we are committed to meeting this need with unwavering dedication and innovation. The Board of Directors and staff leadership have recently created a strategic plan based on the pillars of growth, finance, structure, model of care, and marketing to guide us to a successful future for years to come.

A Heartfelt Thank You

We want to extend our deepest gratitude to each and every one of you who has supported us on this journey. Your contributions, whether through donations, volunteering, or simply spreading the word about our mission, have made an immeasurable impact. Together, we are creating a legacy of care, compassion, and hope. Thank you for your unwavering support and for being an integral part of our community.

With heartfelt gratitude,



Debbie Stitzer-Brame
Executive Director



Jon Arena
Board President

Our Story So Far

OUR MISSION

The mission of Edmarc is to ease the trauma of a child's illness or death, and to reduce the disabling effects of pediatric illness, loss and bereavement

OUR VISION

Edmarc is a national leader in pediatric home-based hospice and palliative care.



OUR VALUES

At Edmarc:

- We value our children and families as the heart of Edmarc.
- We believe positive relationships are the building blocks of success.
- We believe open communication, trust, and collaboration form our foundation.
- We believe our culture fosters diversity and curiosity and embraces change.
- We champion the well-being of future generations through responsible stewardship.
- We hold our unwavering passion as the heartbeat of our mission.

“The organization helped us honor our daughter and fulfill all the things we had hoped to accomplish while carrying her, despite receiving a life-limiting diagnosis for Tyrah.”

Core Services

Nursing

At Edmarc, in-home care is the cornerstone, enabling comprehensive care for children. Our dedicated team of nurses prioritizes the needs of both the patient and their family. We offer a range of services at home, such as:

- Blood transfusions
- Lab work
- Intravenous (IV) fluids
- Line maintenance
- Medication supervision
- Pain control
- Education for patients and families
- Wound care



Patient & Family Support

Edmarc's medical social workers provide support and empower families with the necessary resources to navigate difficult situations. When a child is sick, parents encounter obstacles like financial strains, balancing work commitments, and being there for their children, all while coping with the emotions that come with a severe medical condition. Edmarc's social workers are adept at advocating for families, tackling their worries, and ensuring a consistent standard of care.

Core Services

Perinatal

Families who discover that their baby may be born with a life-threatening condition do not need to navigate this challenging journey alone. For more than two decades, Edmarc's perinatal program, Bridges of Hope, has been offering cost-free services to families, supporting them through pregnancy, childbirth, and potential loss while honoring both the baby and the family by providing:

- Emotional support for all family members
- Memory-making activities
- Assistance with creating a birth plan
- Help in accessing community resources
- Support with the transition home after birth
- Guidance with bereavement and funeral arrangements
- Volunteer services

Bereavement

Grieving is a unique journey for everyone. That's why Edmarc's bereavement program offers diverse support to families. Dealing with loss, especially the loss of a child, can be challenging. Edmarc extends a helping hand to families as they navigate through their grief journey in various ways, such as:

- Annual Day of Remembrance
- Monthly support groups for mothers and fathers
- Camp M.A.G.I.C.
- Peace by Piece
- Individual or family support calls and visits
- Tailored guidance on the grieving process
- Personalized outreach on significant dates and holidays
- Invitations to Edmarc social gatherings

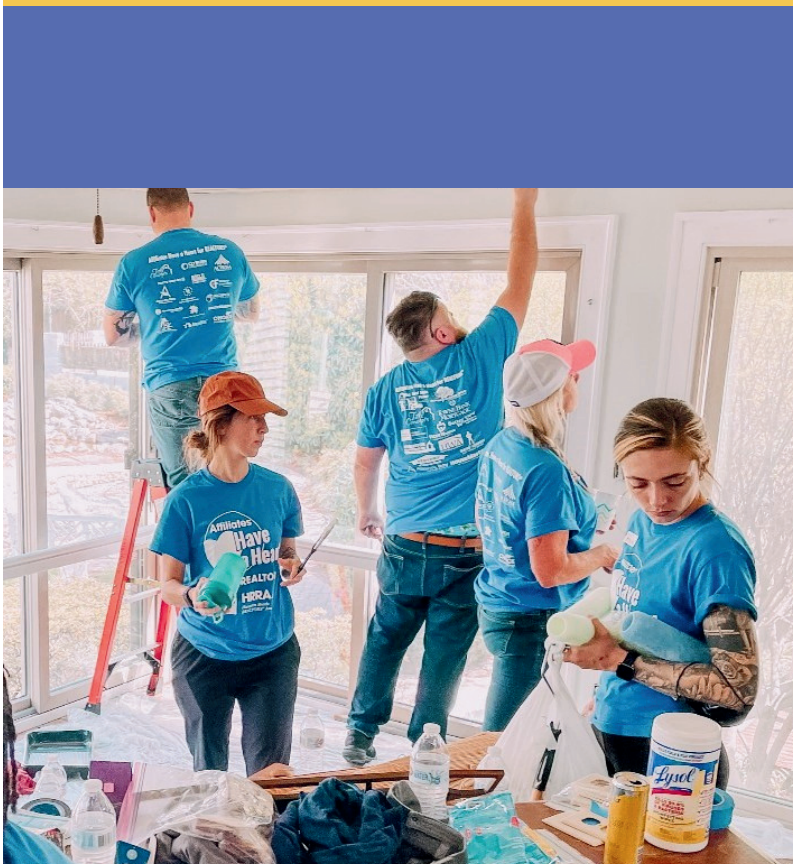


Core Services



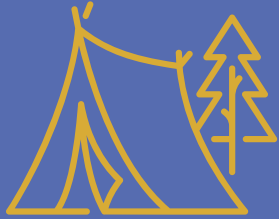
Volunteer Services

Without the dedication, support, and hard work of volunteers, Edmarc would be limited in the services we provide to children and their families. Volunteers play a crucial role by assisting families directly and supporting office tasks, offering comfort, strength, and inspiration to children, families, and staff within the Edmarc community. From its beginnings as a volunteer group, Edmarc's mission has always been intertwined with the essential contribution of volunteers, shaping the organization we are today.

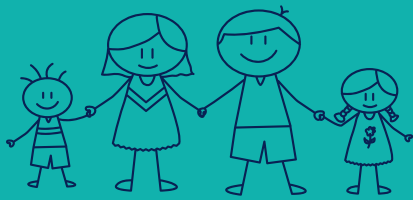




115 children with serious or life-limiting illnesses were cared for this year.



60 participants attended Camp M.A.G.I.C.



300+ children and family members attended our events.



66 Peace by Piece participants received support for 9 months.



14 perinatal families received help from Medical Social Workers.

Achievements & Performance

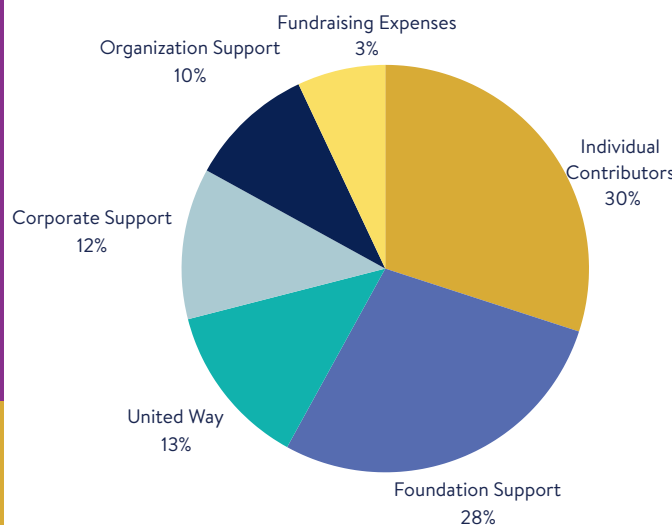
Edmarc assists more than 115 children and 400 families annually in the clinical program and more than 150 individuals and 525 families in the bereavement program. Ongoing efforts focus on expanding services while also enhancing the support for those already served in one of the programs. Expanding to Williamsburg and the surrounding areas means doubling the capacity to help families in critical need of our services. The new telehealth service has enhanced the clinical program by giving staff the capability to conduct virtual visits and provide continuous care and support to patients. By increasing feelings of support and connectivity, staff empower the families to actively participate in the clinical care and reduce their travel needs.

Edmarc continues to invest in staff through extensive training programs and professional development options. Whether attending a pediatric palliative care conference or taking part in a national symposium on children's grief, staff have the opportunity to grow in their fields.

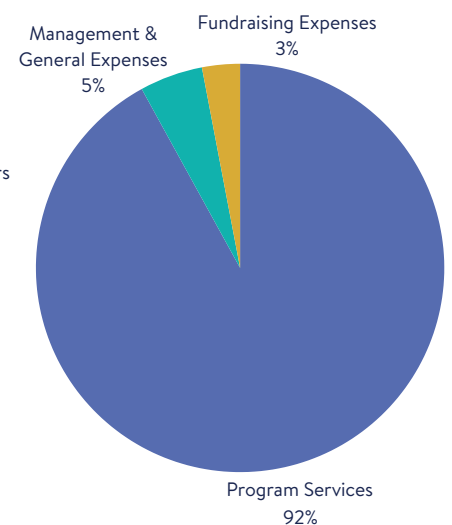
Edmarc Financials

Fiscal year 7/1/2022 to 6/30/2023

Revenue Sources:



Expenses:



Expansion Campaign

Thanks to the unwavering support and generosity of our donors, partners, and community, we have not only met but exceeded our fundraising goals. Your contributions are paving the way for a brighter, healthier future for countless children and their families.

Campaign Success by the Numbers

Total Funds Raised: \$2,008,540.70

Service Reach: Expansion into Williamsburg, James City County, Gloucester, Mathews, New Kent, and the surrounding areas.

Enhanced Programs: Introduction of new telehealth services

Virginia Department of Health Partnership

After raising \$2 million from private sector funds, Edmarc sought support from the Commonwealth of Virginia to provide services in the expanded region, giving us seed money and time to further build private support in the area. In October 2022, Edmarc received \$2 million.

Celebrating Community Spirit

This campaign's success is a testament to the power of community spirit and collective effort. We extend our deepest gratitude to everyone who contributed time, money, and resources to this cause. Your dedication is helping us transform lives and build a stronger, healthier community.



Campaign Contributors

Campaign Goal: \$2 million

Total Raised: \$2,008,540.70

\$100,000 & Above

Beazley Foundation
Children's Health Foundation
Mark & Debbie Jones
The Perry Family Foundation
TowneBank Foundation

\$50,000 - \$99,999

Martha & Royden Goodson
Joan & Allen Hogge
Impact 100 Greater Peninsula
Jimmye Laycock Charity Golf Classic
Hon. Joseph P. Massey in memory of
Al Taylor & in honor of Fran Taylor

\$25,000 - \$49,999

Robert & Elise Balcom
Bernardine Franciscan Sisters Foundation
Blake & Jennifer Boykin
Bud Brame & Debbie Stitzer-Brame

\$25,000 - \$49,999 (cont.)

Langley for Families Foundation
Linda D. Pegram, MD & David B. Dorofi,
MD in memory of Ione D. Pegram
David & Ginny Pritchett
Charity Volman-Winn

\$10,000 - \$24,999

Jonathan & Mari Arena
Amie & Daniel Baty
Patrick & Susan Blake
Capital Group Companies Charitable
Foundation
Pat & Jane Garvey
Cyrus Heydarian, MD
Jean Hibbard
Nemo & Stacey Larmore
Linda & Jeff Minnix
Joe & Victoria Morrissey
Mike & Kathy O'Connor
The Roberts Family



Campaign Contributors

Campaign Goal: \$2 million

Total Raised: \$2,008,540.70

\$5,000 - \$9,999

Carolyn Abbitt
Mary Helen & Patrick Hilton
David Kenerson
Nancy & Wesley King
John Mattern
Janet Moore
Donald Patten
Dr. & Mrs. Jeffrey B. Persons
Tudie & Bill Saunders
Lori & Alan Strickland
Suffolk Presbyterian Church
Keith & Greta Vander Vennet
Williamsburg Presbyterian Church

\$1,000 - \$4,999

Rob & Mary Cowling
Ken & Clara Crumbly
The Curtis Group
The Wendy C. Drucker Family Foundation
Nan C. Eddins
Herb & Mary Haneman
The Joe & Leanne Harrow Fund of the
Williamsburg Community Foundation
Holbach-Hill Fund of the Williamsburg
Community Foundation
John & Emma House

\$1,000 - \$4,999 (cont.)

Liz Moore and Associates
Melissa Mark, MD
Kelly McCann
Wendy McGrady
Kevin & Mindy Murphy Charitable
Contribution Fund
Charles Pond
Bob & Roberta Roth
Wilbanks Smith & Thomas Asset
Management, LLC
Williamsburg Community Foundation

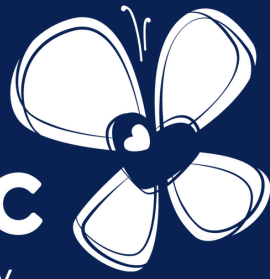
Under \$1000

Thomas Cherry
Steve Cummings & Sherron Ware
Rob & Susan Goetz
Kendall & Nancy Jones
Mary Morgan
Sylvia Payne
Regina Wright
Conway Sheild
Martha Stewart

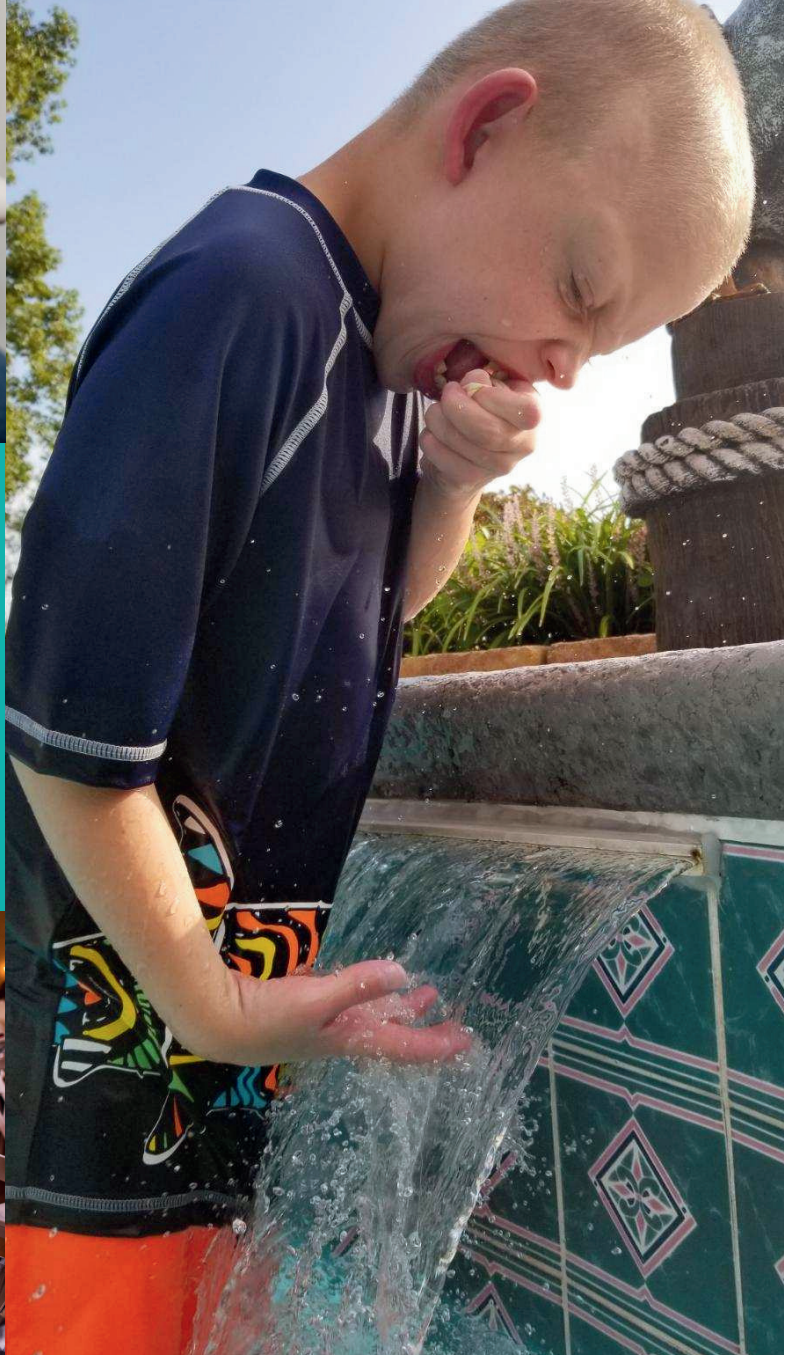


edmarc

hope for the journey



We thank you for your continued support in our programs.



Edmarc

516 London Street

Portsmouth, VA 23704

757-967-9251

www.edmarc.org